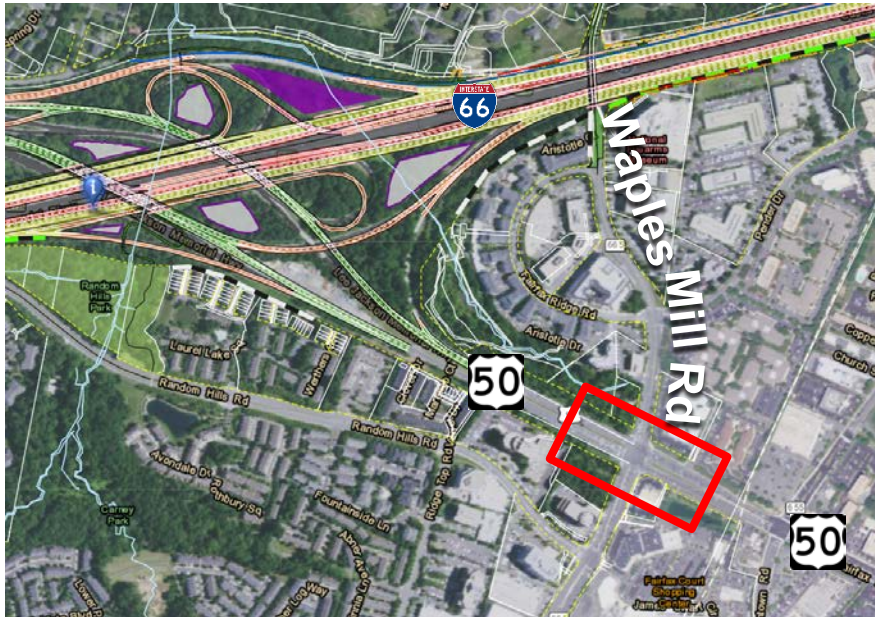


# Route 50 and Waples Mill Road Intersection Improvements



- Location: Fairfax County
- Anticipated Completion: Mid 2022
- Requested Funds: \$2.0M

- Project Description:
  - Provides a second left turn lane from WB Route 50 onto Waples Mill Road
  - Other intersection modifications:
    - Traffic Signal timing improvements on Waples Mill Road approaches;
    - Three EB through lanes, Two WB left turn lanes on Waples Mill Road;
    - Reconfigure EB I-66 on-ramp from WB Route 50 to shared thru/exit lane.
- Project Benefits:
  - Increases capacity and reduces the level of congestion and delay on Route 50 approaching I-66.
  - Improves traffic flow for commuters entering and exiting the I-66 General Purpose and Express Lanes.