



TRANSFORM 66  
**OUTSIDE** the Beltway

VDOT | DRPT

# Transform 66 Outside the Beltway

Community Information Meeting  
Nutley Street Design Improvements

June 5, 2019





TRANSFORM 66  
*OUTSIDE the Beltway*

VDOT | DRPT

# Nutley Street Interchange

## *Why Propose a Design Alternative*

- Additional design detail and traffic analysis showed that a double roundabout interchange concept could offer improvements to traffic operations at the interchange and adjacent intersections over the diverging diamond concept
- Deliver a context-sensitive solution in keeping with the character of the Nutley Street corridor



TRANSFORM 66  
**OUTSIDE** the Beltway



# Nutley Street Interchange

## Benefits of the Double Roundabout

### Improved Traffic Flow

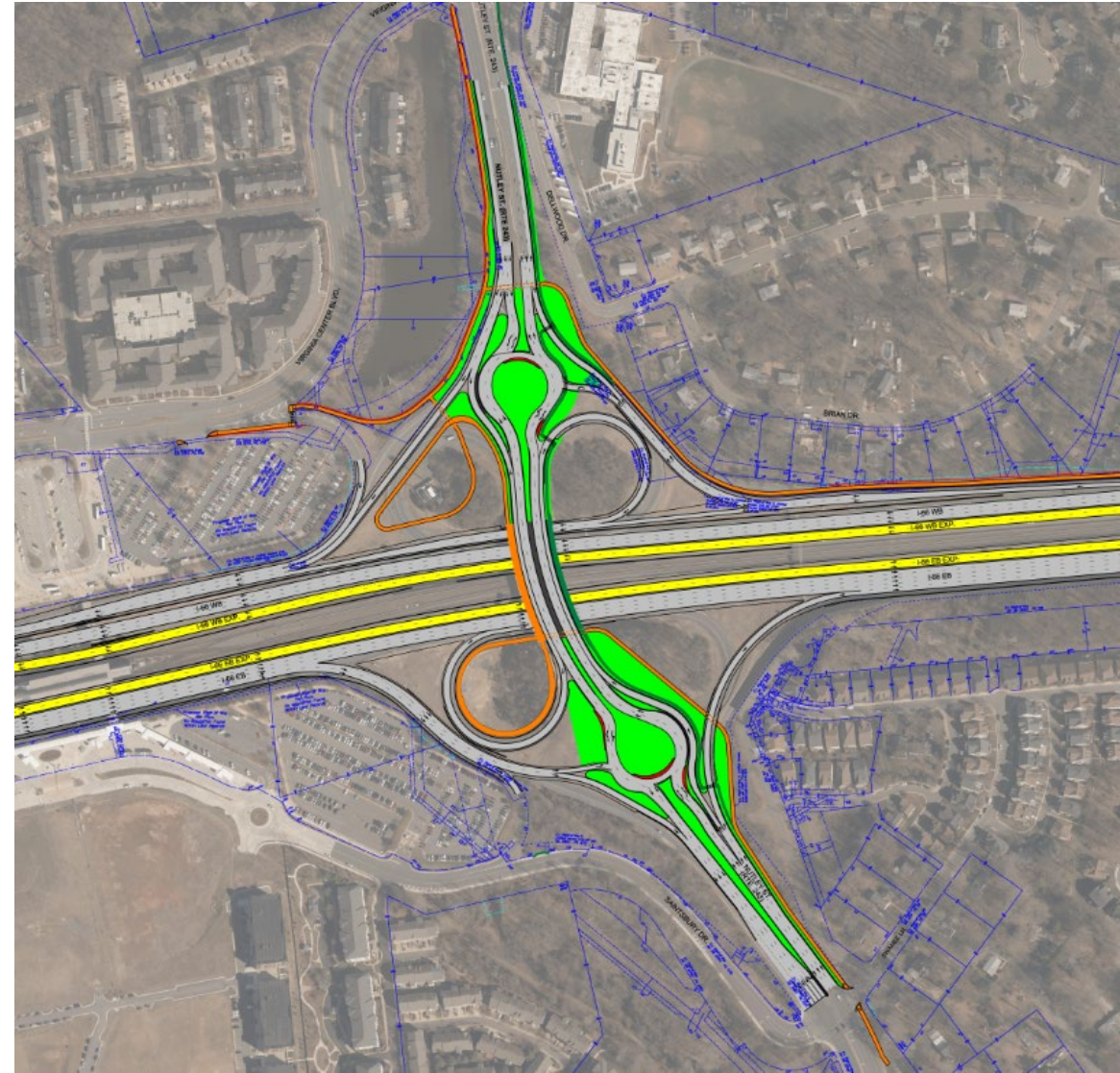
- Eliminates the need for all traffic signals previously proposed in the DDI design
- Roundabout design naturally regulates speed on Nutley Street at I-66
- Improves future traffic operations on Nutley Street

### Reduced Construction Impacts

- Less disruptive to surrounding communities by eliminating bridge construction
- Reduces right of way impacts on the surrounding community
- Does not impact Metro facility

### Bike and Pedestrian Improvements

- Enhances multimodal access with a grade-separated shared-use path
- Sidewalk extends through interchange with high-visibility crossings where necessary
- Shared-use path connects to planned trail to the north (Town of Vienna trail) and west (Fairfax County/VDOT trail)



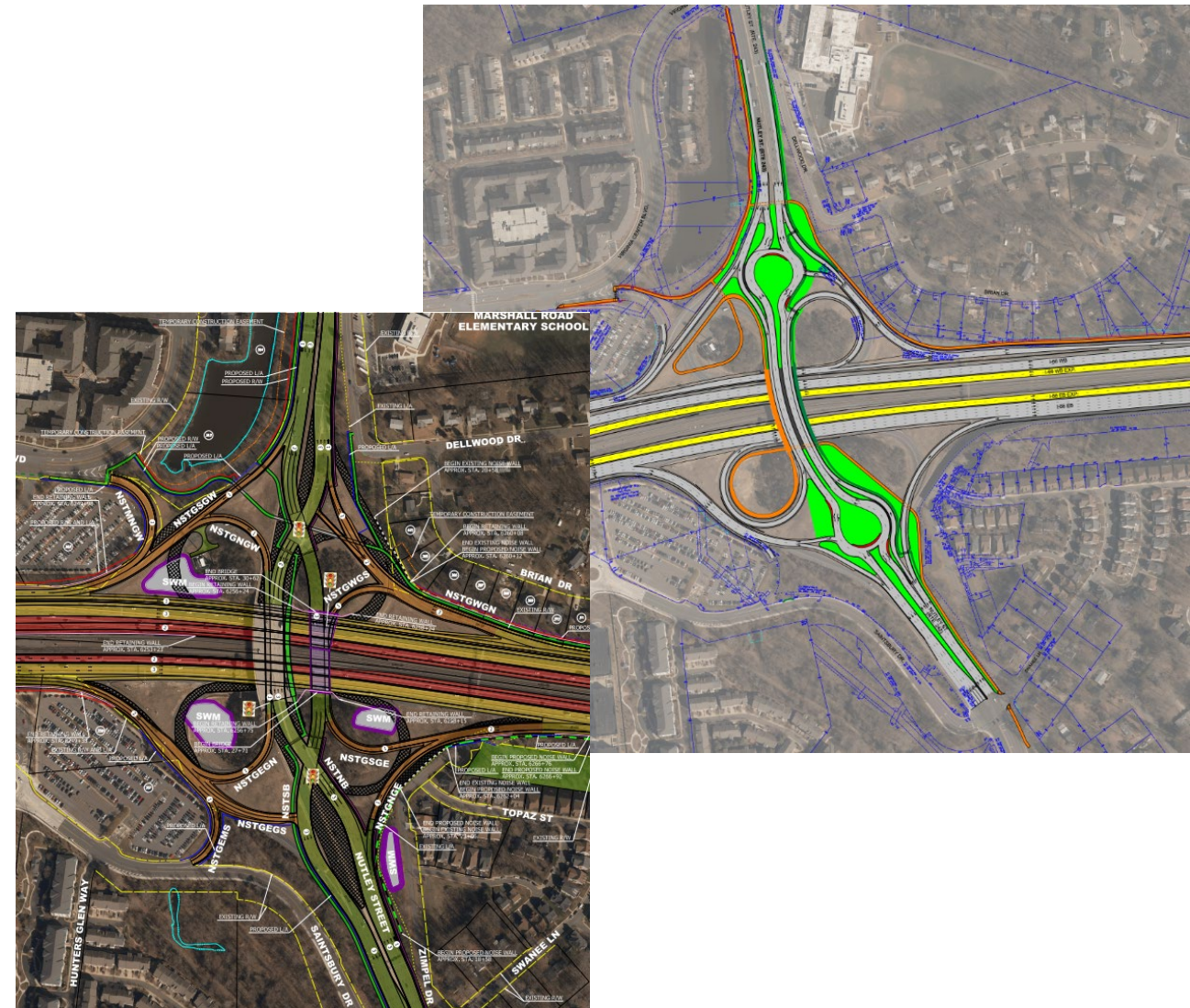


TRANSFORM 66  
**OUTSIDE** the Beltway



# Nutley Street Interchange Traffic Movements

- The double roundabout solution combines a double roundabout with a partial cloverleaf to accommodate the needs of the Nutley Street Interchange
- The double roundabout provides all of the same movements that exist at the Nutley Street Interchange today
  - Maintains traditional traffic pattern on the right side of the road (DDI crossed thru traffic to the left side over I-66)
  - Maintains separate on-ramps from each direction of Nutley Street (DDI combined ramps)
  - Ramps to I-66 remain on the right side of Nutley Street (DDI had one access on the right and one access on the left in each direction)





TRANSFORM 66  
**OUTSIDE** the Beltway

VDOT | DRPT

# Nutley Street Interchange Next Steps

- Following tonight's meeting, designers will work to address comments and finalize design
- Anticipate final design approved later this summer
- Anticipate construction of pedestrian box culvert for shared-use path on the north end of interchange to begin by early 2020





TRANSFORM 66  
**OUTSIDE** the Beltway

VDOT | DRPT

# Other Upcoming Construction Activity in Area

Construction sequencing and schedule still in development for the following activities:

- Saintsbury Drive ramp to I-66 East closure
- Vaden Drive bridge and Express Lane ramp construction
- Traffic pattern changes

*Look for updates and community outreach in Fall 2019*

Sign Up for Alerts @ [Transform66.org](https://transform66.org)